

***Flatdata 1.56D* Data Conversion Software**

User's Manual

(Revision 1.05)

Table of Contents

1. Overview	3
2. System Requirements	4
3. Getting Started	5
3.1 Installation	5
3.2 Basic software operations	6
3.2.1 MS Access Database Configuration	6
3.2.2 CSV Files Source Path Configuration	7
3.2.3 CSV File Format	8
3.2.4 CSV Files Backup & Handling	9
3.2.5 Start Flatdata Engine	10
3.2.6 Stop Flatdata Engine	10
3.2.7 Exit from Flatdata Software	10
3.2.8 Create MS Access database and table	11
4. Menus And Errors	12
5. Operation Status	14
6. References	15

1. Overview

The Flatdata version 1.56D is the primary means for performing data conversion from CSV data to MS Access database. The Flatdata engine has a comprehensive set of features to allow you to export, monitor and process the CSV data.

The Flatdata software has a complex data filtering to prevent the illegal and invalid CSV data to be processed or exported into MS Access database accidentally. It will quarantine any illegal and invalid CSV files found during the data processing

Additionally, the Flatdata engine provides CSV data backup after exporting the data into the database.

For more information about Flatdata software, refer to the references that came with this user manual or visit our website : <http://www.flatwareshock.tripod.com>

2. System Requirements

The Flatdata version 1.56D software will run on Windows XP or higher operating systems.

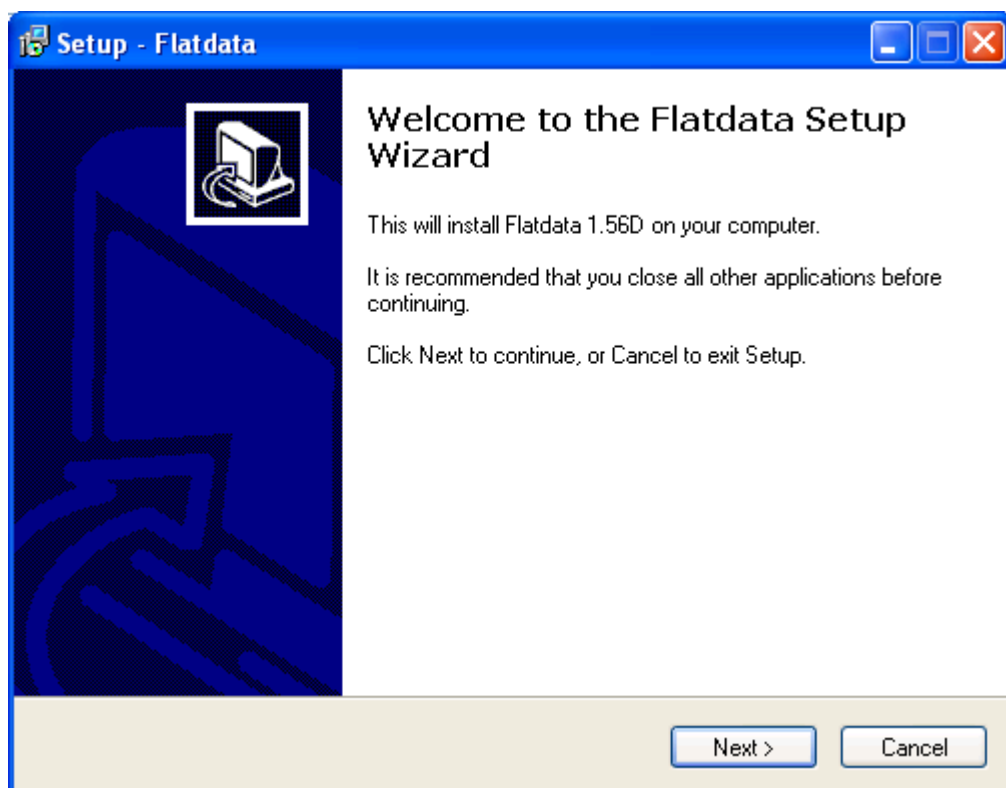
Minimum Hardware Requirements:

- > Intel Pentium-class processor; Pentium 3 or higher processor recommended.
- > 256 MB of RAM.
- > .NET Framework 3.5 or higher version to be installed at your computer.
- > 500MB of harddisk space or above.
- > VGA or higher resolution monitor. Super VGA recommended.

3. Getting Started

3.1 Installation

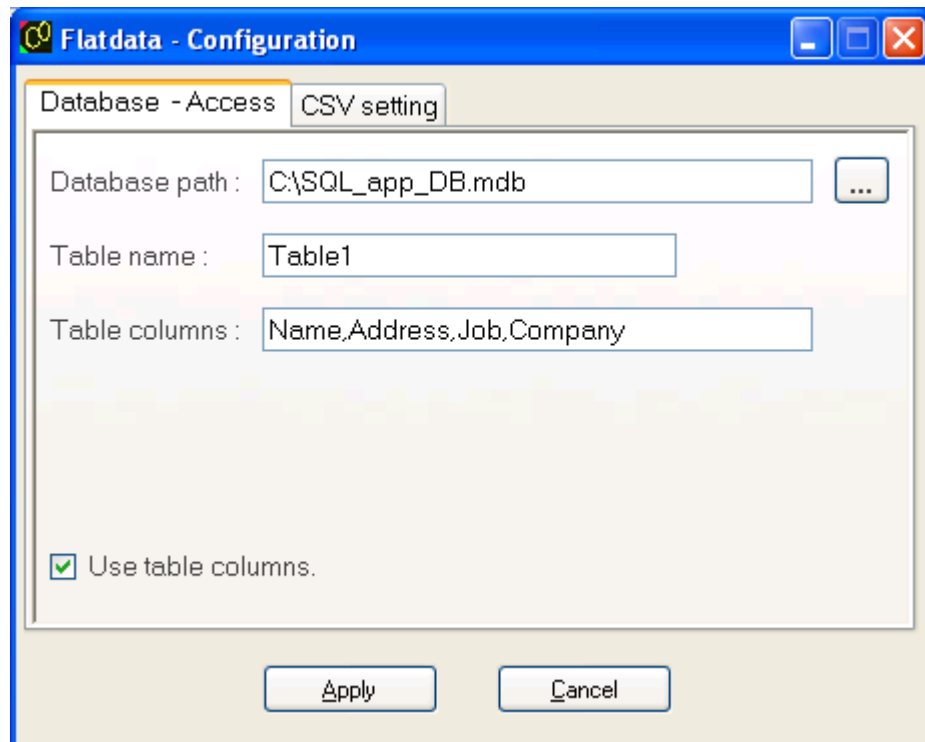
To install Flatdata software, use Windows explorer to browser the CD or harddisk for “*Flatdata156D Setup.exe*” and click on it. The wizard will then guide you through the installation.



3.2 Basic software operations

3.2.1 MS Access Database Configuration

We can select the MS Access database, table name and columns for saving the CSV data via the Flatdata's configuration window.



The table column can be created through 2 options :

Use table columns.

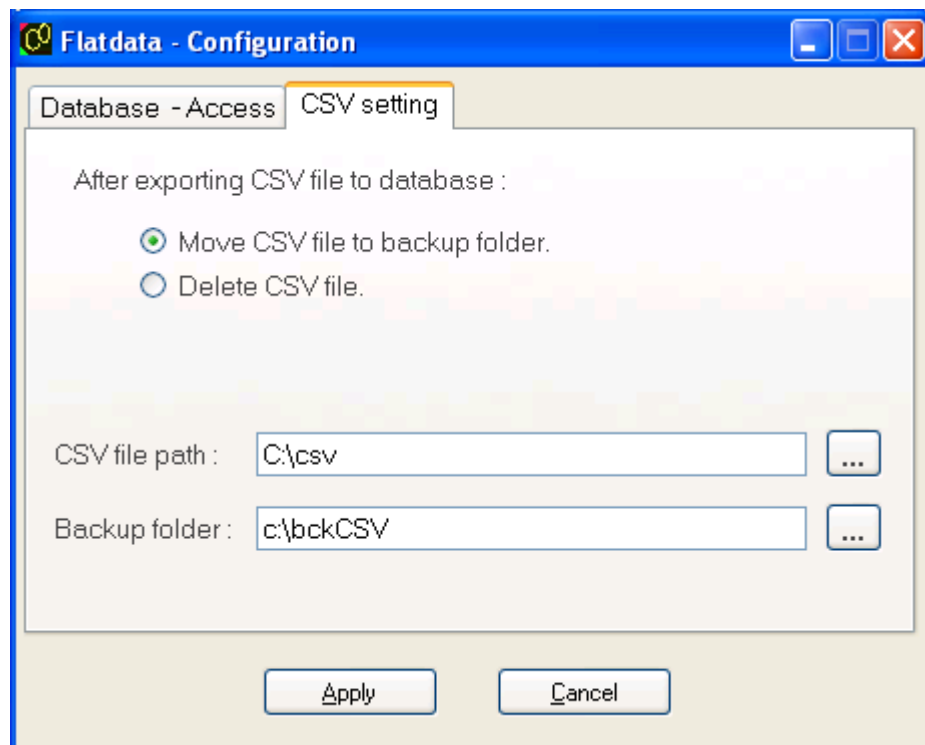
This table column option is located at the Flatdata's configuration window and it will use "Table columns" field input as the database's table columns.

CSV file table columns.

When "Use table columns" option is not selected, then Flatdata engine will read the CSV file's table columns, then use it as the database's table columns.

3.2.2 CSV Files Source Path Configuration

Flatdata engine will browse the CSV file path (as configured in “CSV file path” field). When CSV files are arrived at CSV file path, then Flatdata engine will open CSV file, then retrieve & validate the CSV data before exporting into the database.



3.2.3 CSV File Format

The CSV file must follow the data format requirements, otherwise Flatdata engine will prompt an error message.

- Table Column format.

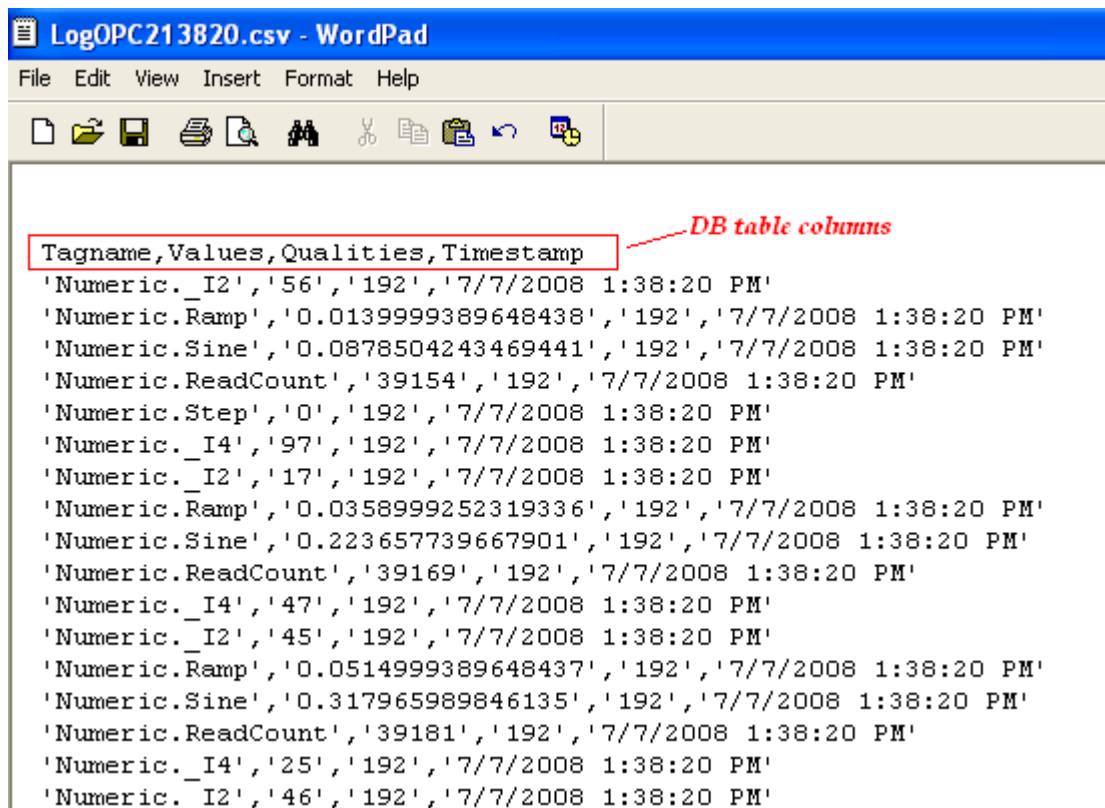
Each table column must be separated by comma (,).

Example: *Name, Home address, Job, Telephone*

- CSV data format.

Each CSV data must be separated by single quote (') and comma (,).

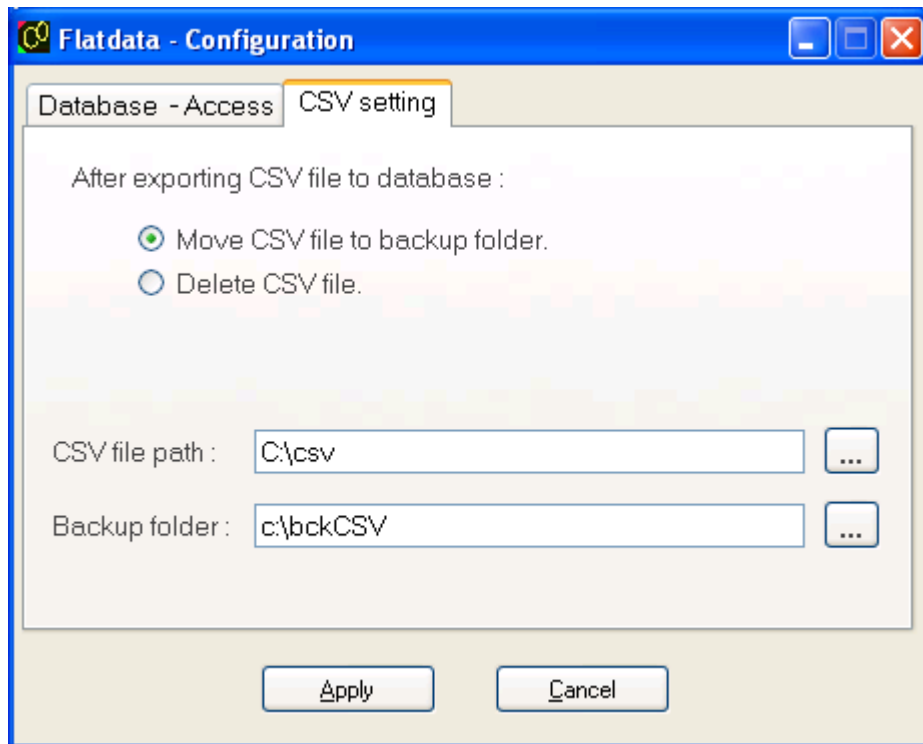
Example: *'Allen Koelisch', '23 Dortmund Strase 2', 'Marketing Supervisor', '+49-294-88712'*



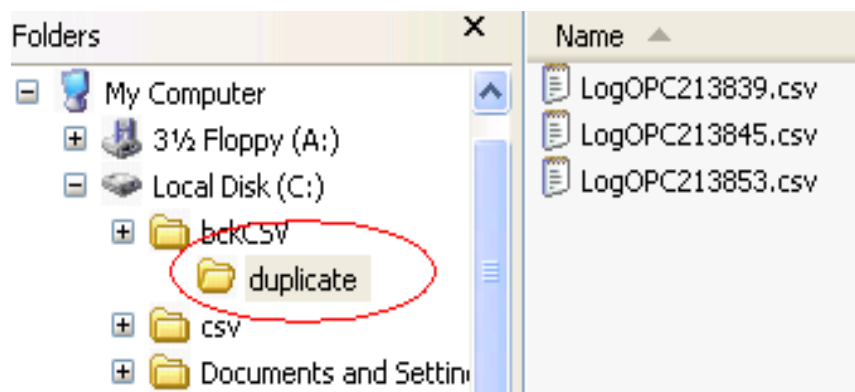
3.2.4 CSV Files Backup & Handling

The Flatdata software has a comprehensive set of backup features to allow user to move the exported CSV files to the predefined folder or delete the exported CSV files.

The “Backup folder” input field in the Flatdata's configuration is the parameter to define the CSV backup location.



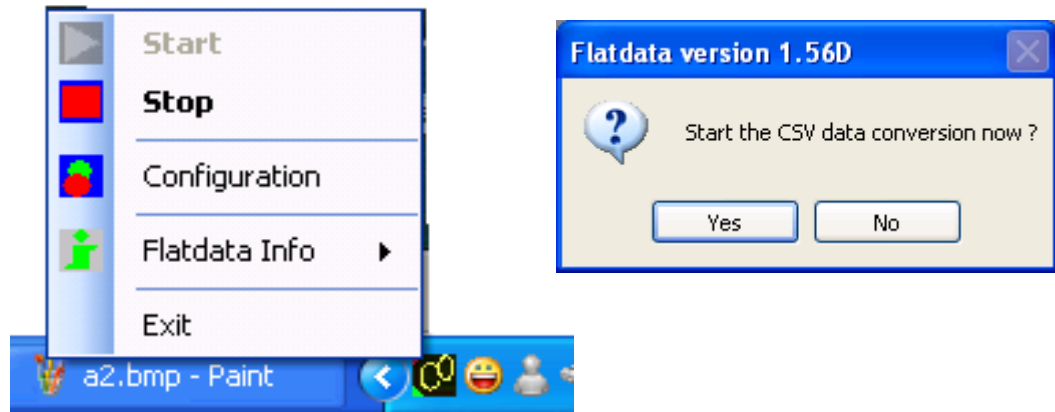
During CSV backup, Flatdata engine always detect any duplicate or similar CSV file name in the backup folder, if CSV file detected, then it will be moved to “duplicate” folder.



3.2.5 Start Flatdata Engine

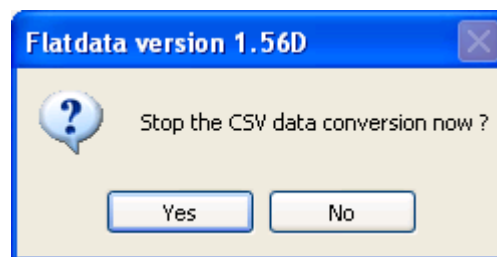
In some circumstances, the Flatdata engine can be stopped by user or due to the internal process errors. The user can start Flatdata engine again when the process errors are cleared.

To start the Flatdata engine, user should right-click the Flatdata icon at Windows taskbar, then click on “**Start**” menu.



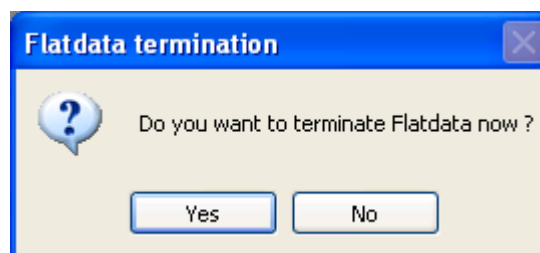
3.2.6 Stop Flatdata Engine

To stop the Flatdata engine, user should right-click the Flatdata icon at Windows taskbar, then click on “**Stop**” menu.



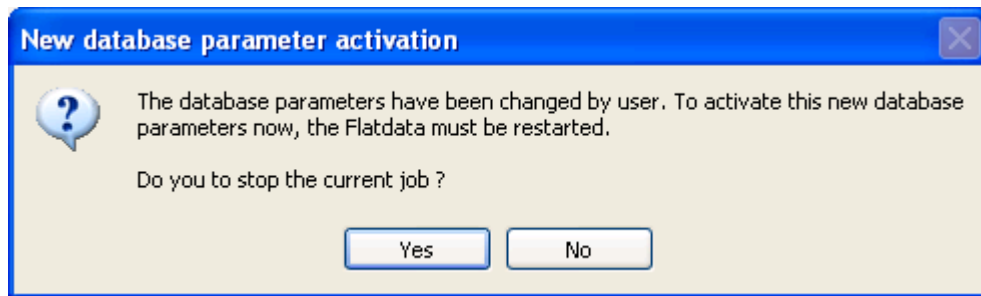
3.2.7 Exit from Flatdata Software

To terminate the Flatdata software, user should right-click the Flatdata icon at Windows taskbar, then click on “**Exit**” menu.

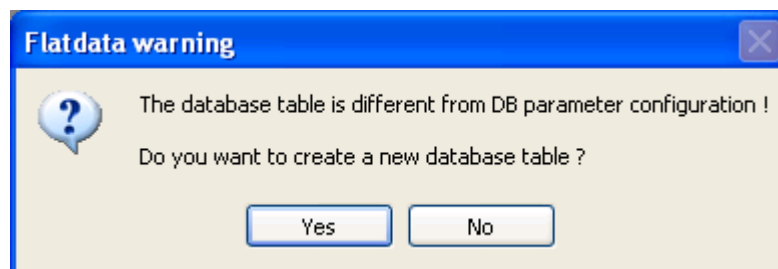


3.2.8 Create MS Access database and table

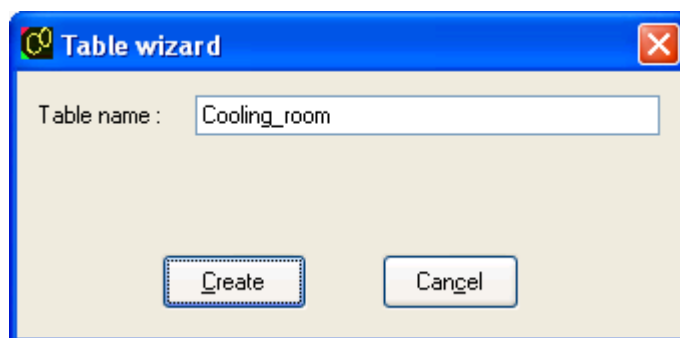
The Flatdata engine always check for database, table and its columns existense during CSV data processing. Whenever current database, table or table columns are different from Flatdata configuration or not exist, then database, table or table columns will be created a automatically.



When user changed the MS Access's table name, the Flatdata engine prompts the request to stop the current data conversion, in order to create a new table.








Click "Yes" button to start new table creation.



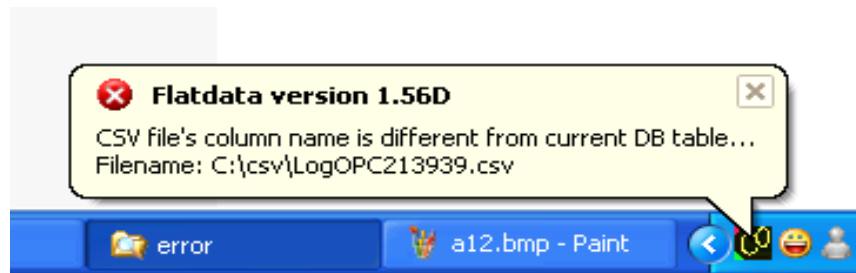
Enter the new table name and click on "Create" button to continue.

4. Menus and Errors

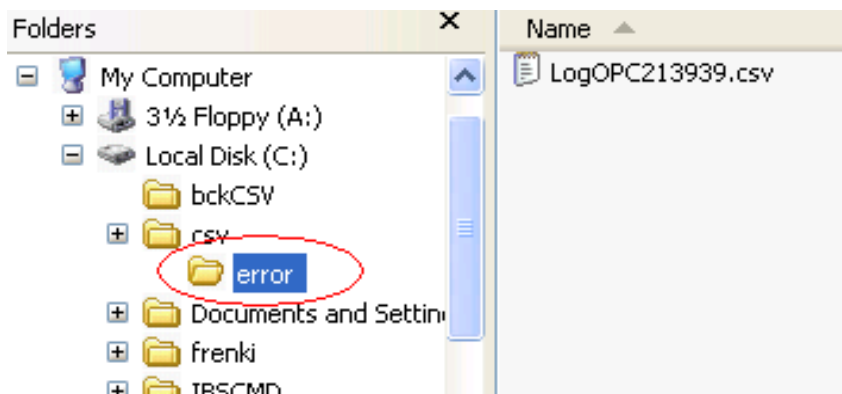
4.1 Menus

 Start	To start Flatdata engine.
 Stop	To stop Flatdata engine.
 Configuration	To configure database and CSV file backup
 Exit	To terminate Flatdata software.
 Flatdata Info	To view software version, technical support and user manual.

4.2 Errors



The above error is due to CSV file table columns does not equal to database table parameters.



The Flatdata engine creates a new folder called “error” at CSV file source path to quarantine the invalid CSV files.



This error is due to current file is not CSV file

5. Operation Status

Below is the Flatdata software operation status :



Flatdata engine is ready and waiting for CSV data.



Flatdata engine is exporting CSV data.



Restart the Flatdata engine after configuration changes.



Flatdata engine initialization.



Flatdata engine is stopped or offline.

6. References

L I C E N S E A G R E E M E N T

Copyright (C) 2004-2009 Flatware Company & BAD Associates, All right reserved.

Authors: Flatware Company & BAD Associates.

Email: lim_frenki@yahoo.co.uk

Distribution Policy:

All Flatdata programs, data, source and documentation files are copyright - reserved free software. You may use, copy and distribute it free of charge under the following conditions:

1. Never change the copyright statement.
2. The Flatdata package must be distributed in absolutely unmodified form, including all program, data, source and documentation files.
If you distribute Flatdata to friends, associates, ftp or web sites, CD-ROM publishers, or to computer bulletin board systems (BBS), be sure to distribute it entirely and unchanged.
3. Flatdata software must not be sold for profit. No charge or payment may be levied or accepted for it.
4. Flatdata software may be distributed with other free or commercial products (i.e. software, books, evaluation boards), if it is no functional part of these products, and without extra cost. Do not distribute Flatdata together with protected software.
5. All source files provided with the Flatdata package may be modified for personal use, but not redistributed. Changes that may be of general interest should be sent to the author.
6. This notice may not be removed or altered from any distribution.
7. Exceptions are only possible with a written permission of the author.

Disclaimer:

This software is provided as it is, without warranty of any kind, expressed or implied, including but not limited to the implied warranties of merchantability and fitness for a particular purpose.

The person using the software bears all risk as to the quality and performance of the software. The author will not be liable for any special, incidental, consequential, indirect or similar damages due to loss of data, time or profit or any other reason, even if the author or an agent of the author has been advised of the possibility of such damages.

Flatdata software, data and documentation are subject to change without notice.

Flatdata is a trademark of: Flatware Company.

SQL is a trademark of: Microsoft Corporation.

MS Access is a trademark of: Microsoft Corporation.